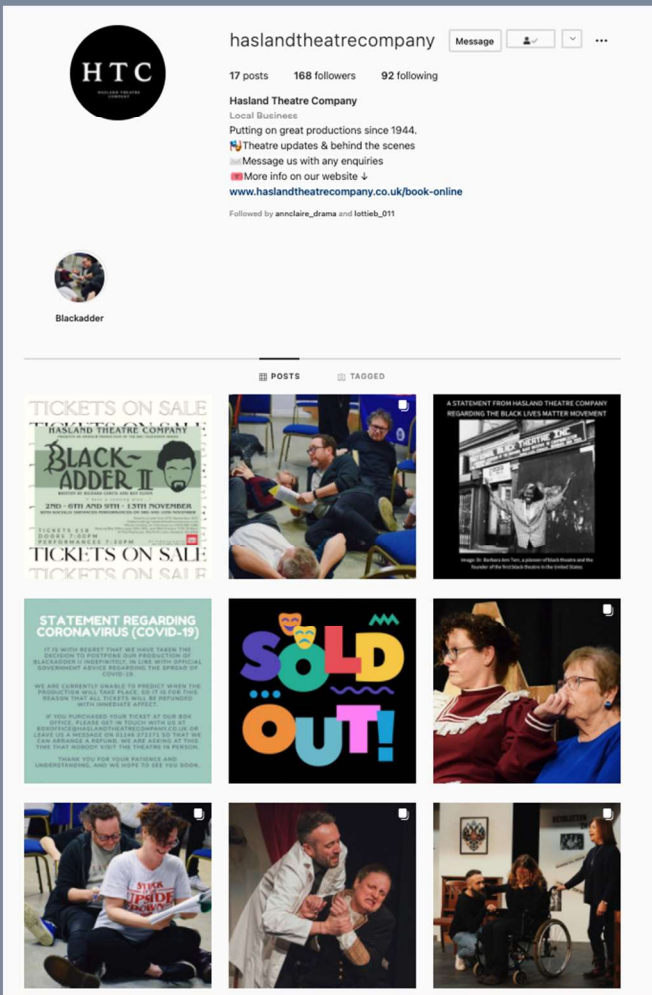


Share the love on social media



Instagram
@haslandtheatrecompany

Twitter
@haslandtheatre

Facebook
Hasland Theatre Company

Why not join us?

As a member, you can be cast in any Hasland Theatre Company show, plus you can get involved in a range of activities on and off stage, including front of house, box office, stage design and construction, costume design, stage management, play readings and social events. You will also receive our members' newsletter, all for only £10 a year.

So why not come along and join our great team? For further details, contact Tom on 01246 272271, or send us a message on Facebook.



Hasland Theatre Presents...

"Hasland Theatre Presents" is a group of HTC members who are available to give entertaining talks to local groups.

Contact Rachel on 01246 569573 or 07919127457 if you'd like us to visit you to tell you more about the life and history of our long-running theatre group.

Fawbert Adams Chartered Accountants Chesterfield
For independent taxation, investment & accountancy advice.
We are pleased to be associated with Hasland Theatre Company
Contact Antony Fawbert 01246 276671

HASLAND THEATRE COMPANY

AN AMATEUR PRODUCTION
IN ASSOCIATION WITH THE BBC

Blackadder II

by Richard Curtis
& Ben Elton



2ND-6TH AND 9TH-13TH
NOVEMBER 2021

Director's Notes

590 days have elapsed since we originally scheduled to perform Blackadder II - that's a whole 14,160 hours since we put all this on hold, lit the ghost light that has continued to burn on stage throughout that time; a beacon that glows the promise that we would return. And here we are. Thank you for coming back too. We hope you enjoy the performance as much as we have relished returning to the stage.

Blackadder II first aired on BBC1 in the first two months of 1986. The writers, Ben Elton and Richard Curtis moved this second series on a hundred or so years from 1485 to the Elizabethan era. Edmund, now a Tudor courtier, spends his life attempting to win the queen's favour while avoiding execution by beheading - a fate which befell many of Elizabeth's suitors!

This series (and the subsequent and equally successful third and fourth ones) differed markedly from The Black Adder - the first series broadcast in 1983- notably with Ben Elton replacing Rowan Atkinson as second writer and, with tighter budgets, filming taking place in studio sets rather than on location. The core characters of Edmund, Lord Percy and Baldrick remained, with changes in those characters' personalities, creating a more caustic, Machiavellian Edmund and a less intelligent Baldrick. Rowan said in an interview in 2003 'I loved doing Blackadder. The joy of a historical sitcom is that, in some ways, it never actually ages. Working with such fantastically good actors, there was a sense of shared responsibility, a great sense of being a troupe, sharing the support.' As directors, we feel the same way. As a rule, comedy isn't easy to perform or direct, but genius comedy writing, when it comes along, is a joy both to perform and direct!

Our own talented 'troupe' has been amazing; each actor and crew member has worked tirelessly to bring you what we know will be a great evening's entertainment. We thank each and every one of them for their humour and dedication, making all of our cunning plans a reality. We hope you love tonight's entertainment.

Nicky Beards (who, as a 16 year old, sat laughing at Blackadder on TV in 1986)
Heather Davies (who was probably fast asleep in her cot aged 7 months old at the time!)



Cast

Lord Edmund Blackadder - Steve Cowley
Baldrick - John Belli
Lord Percy Percy - Tom Bannister
Lord Melchett - David Brooks
Queenie - Olivia Brooks
Nursie - Barbara Downey

ACT 1 - 'HEAD'

Mr Ploppy - Rob Dean
Mrs Ploppy - Rachel Schofield
Lady Farrow - Louise Sutton
Earl Farrow - Darren Siseman

ACT 2 - 'BELLS'

Kate/Bob - Leila Hunt
Kate's Father - John Preston
Dr Leech - Rob Dean
Young Crone - Rebecca Ward
Wisewoman - Rachel Schofield
Lord Flashheart - Neil Beards

ACT 3 - 'BEER'

Lady Whiteadder - Helen Preston
Lord Whiteadder - John Preston
Partridge - Neil Beards
Piddle - Rob Dean
Frobisher - Darren Siseman

There will be two 10-minute intervals during tonight's performance. We are unable to serve any refreshments due to Covid-19 restrictions.



Rehearsal/behind the scenes photography by Lilly Beards

Treatives

DIRECTORS
Nicky Beards & Heather Davies

STAGE MANAGER
Mark Daly

LIGHTING & SOUND
Peter Davies

SET

Andy Aldred, Heather Davies, Nicky Beards, Andrew Penson, Harry Simpson, Nancy Cryan, Simon Holloway

WARDROBE & PROPS

Noeline Wilkins, Louise Sutton, Nicky Beards, Heather Davies, Bethany Raynor-Goodwin

HAT DESIGN
Pamela Walker

MUSICAL DIRECTOR
Barbara Downey

CONTINUITY
Nicky Beards, Heather Davies, Noeline Wilkins

REHEARSAL PHOTOGRAPHY
Christine Aldred, Graham Martin, Lilly Beards

DESIGN, PUBLICITY & FILM
Lilly Beards

PROGRAMME ARTWORK
Welbeck Kane

FRONT OF HOUSE
HTC Members

Many thanks to:
The Lacemarket Theatre
Velma Pursehouse
Milton Keynes Theatre of Comedy
Fischer's Baslow Hall

Original Blackadder
Theme by Howard Goodall

All licensing proceeds from this production go to Comic Relief.

